

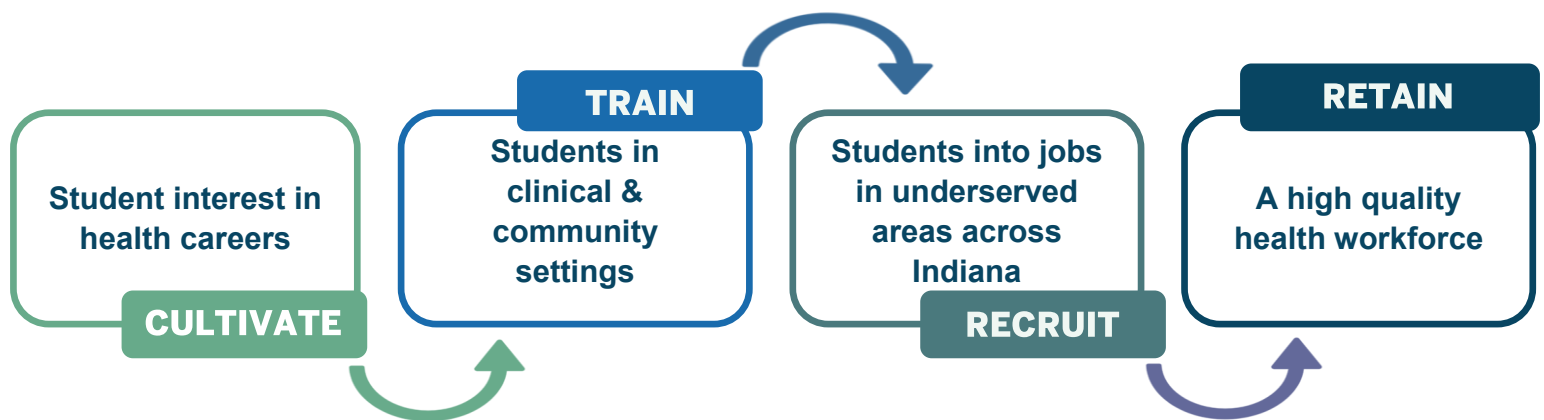


# Annual Report 2023 - 2024



# Indiana Area Health Education Centers Network

The Indiana Area Health Education Center (AHEC) is a workforce development program dedicated to enhancing healthcare access in underserved and rural areas across Indiana. We ignite a passion for healthcare in high school students through exciting career exploration opportunities. We also offer hands-on experiences for healthcare students and vital training for healthcare professionals, equipping them to better serve our Hoosier communities.



The Indiana AHEC Network Office is located within the Department of Family Medicine at the Indiana University School of Medicine. We are proud to work in collaboration with our regional partners across the state.



# 2023-2024 Health Workforce Program Highlights

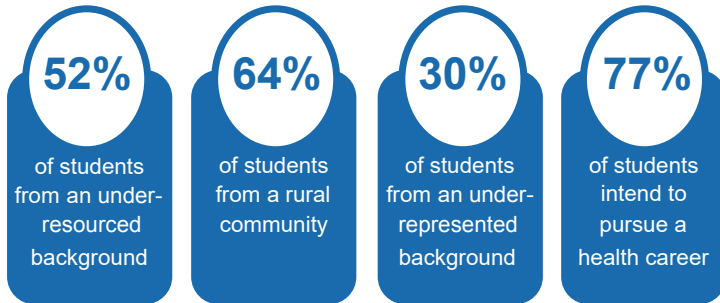


## Pathway Programs

Pathway programs expose students to health careers and develop intent to pursue postsecondary education in healthcare professions.

**4,356**

Indiana students served this year.

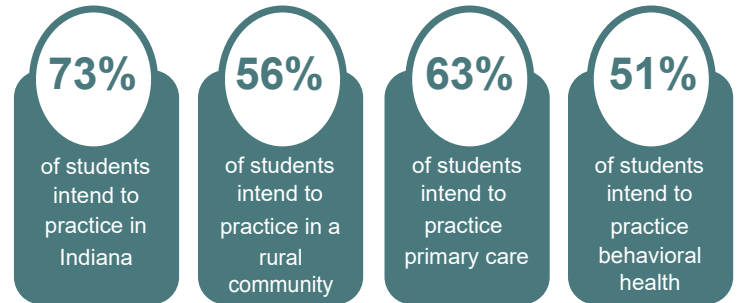


## Community-Based and Clinical Training

Clinical training improves readiness, willingness, and ability of Indiana-based health profession trainees to serve in primary care, rural, and medically underserved communities.

**4,498**

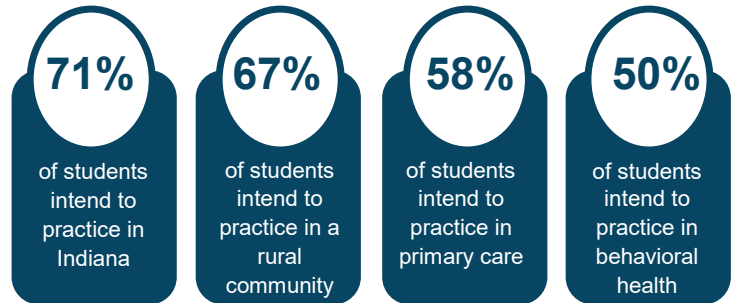
Indiana health profession students served this year.



## Indiana AHEC Scholars

Indiana AHEC Scholars is a two-year intensive program designed to prepare future health professionals with the leadership skills necessary to better serve vulnerable population in rural and underserved communities.

**257** Indiana students were AHEC Scholars this year.



## Continuing and Professional Education

**1,231**

Indiana health professionals served this year.

Continuing education provides health professionals with access to resources to improve the quality of care for Hoosiers in rural and underserved communities.



## Indiana AHEC Making an Impact on the Health Workforce

**9,984**

Individuals who were part of the Indiana AHEC program as students are now licensed health professionals practicing in Indiana.\*

**6,469** Registered Nurses

**1,483** Physicians

**308** Licensed Practical Nurses

**297** Dental Hygienists

**267** Physician Assistants

**225** Pharmacists

**213** Mental Health Professionals

**146** Advanced Practice Nurses

**126** Physical Therapists

**103** Occupational Therapists

**99** Clinical Social Workers

**86** Dentists

**54** Clinical Psychologists

**53** Respiratory Care Therapists

**14** Mental Health Counselors

**13** Optometrists

**11** Dieticians

**10** Speech-Language Pathologists

**\*41% practice in federally designated Health Professional Shortage Areas.**

\*Those indicated above are practicing in Indiana; this data has been tracked since 2014. Additional disciplines with less than 10 alumni not indicated on graphic.

# Indiana AHEC Network Regions

## NWI

Northwest Indiana  
Purdue University Northwest



## NCI

North Central Indiana  
Franciscan Health



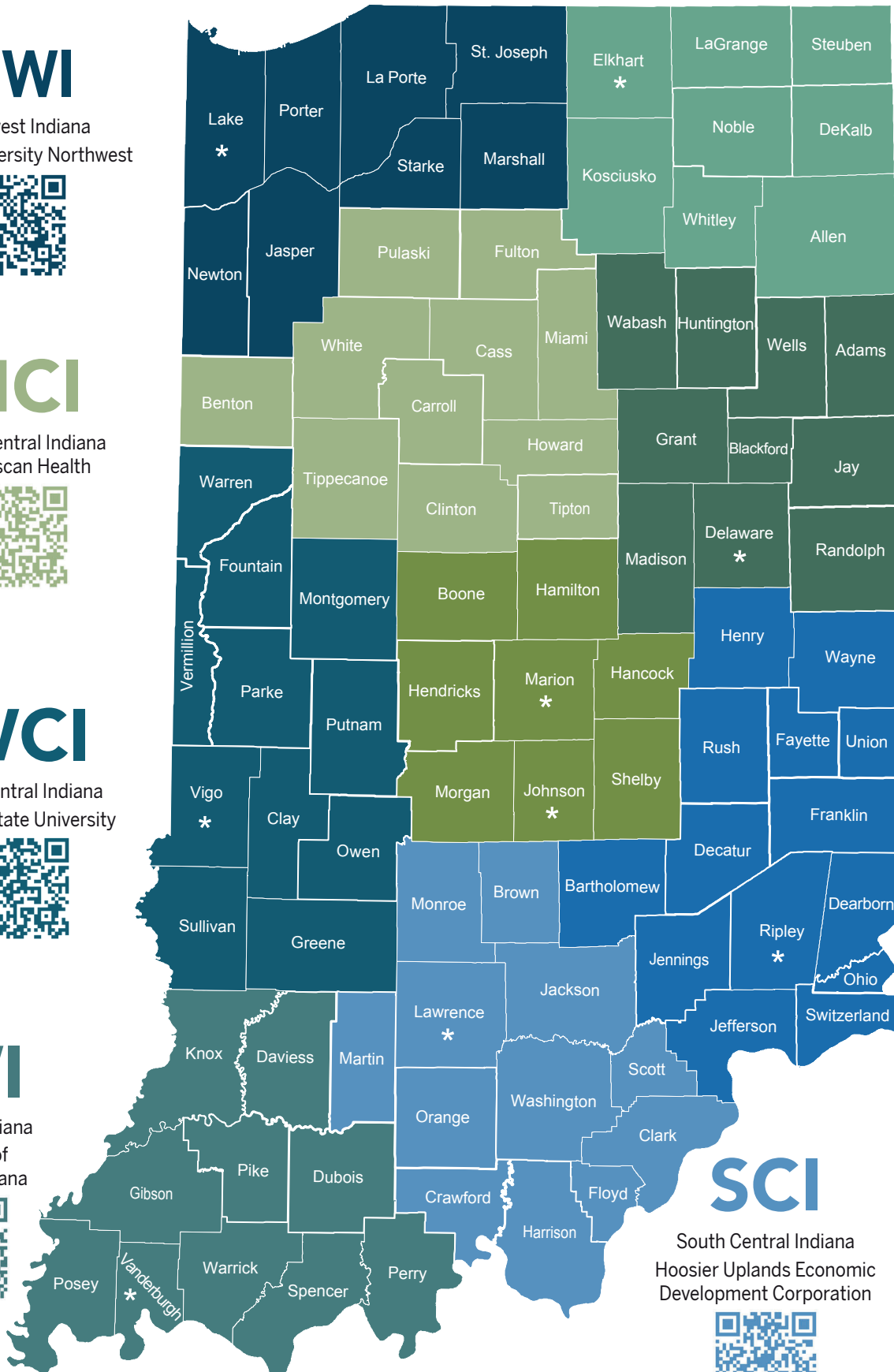
## WCI

West Central Indiana  
Indiana State University



## SWI

Southwest Indiana  
University of Southern Indiana



## NEI

Northeast Indiana  
Goshen College



## ECI

East Central Indiana  
Ball State University



## MICI

Metropolitan Indianapolis  
Central Indiana  
University of Indianapolis



## EI

East Indiana  
Area Health Education Center



## SCI

South Central Indiana  
Hoosier Uplands Economic  
Development Corporation





# Health Career Pathway Programs

## We ignite an interest in health careers.

Whether it's providing a weeklong summer health career camp at a nearby university or an unforgettable job shadowing experience, we inspire young people to envision their best futures as health professionals.



The East Central Indiana AHEC worked with local high school students on understanding the integumentary system.



The West Central Indiana AHEC led 8<sup>th</sup> graders from Marshall Jr. High School in a pig heart dissection lab.



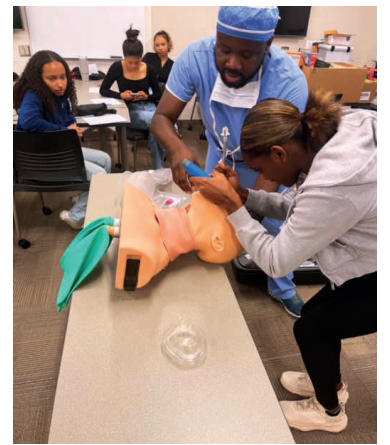
The Southwest Indiana AHEC partnered with the University of Southern Indiana College of Nursing and Health Professions to present variety of engaging activities on health careers for 8<sup>th</sup> graders from Lincoln School (Evansville).



The South Central Indiana AHEC arranges college visits help students explore postsecondary options and make informed decisions in secondary course selection.



The Northeast Indiana AHEC worked with Wawasee High School to help students understand healthcare careers including orthopedic procedures and radiology.



Students who participated in Camp MD through the Metropolitan Indianapolis Central Indiana AHEC learned how to intubate a patient.

# Community-Based and Clinical Training

## We train future health professionals.

Ever visited a doctor who was working with a medical student or been in a hospital where there were student nurses? If your community is rural or underserved, we likely arranged those clinical and community-based experiences as we worked with over 4,000 students last year. Such training increases the chances they might someday practice in a rural or underserved community.



The Northeast Indiana AHEC help support programs designed to train emergency medical professionals. Students in the photo are demonstrating their extrication skills in Steuben County.



The Southwest Indiana AHEC partnered with the University of Southern Indiana Geriatrics Workforce Enhancement Program to help students in the University of Evansville Physician Assistant Program explore the impact of unconscious biases in healthcare and learned strategies to promote inclusivity and equitable treatment for all patients.



The Metropolitan Indianapolis Central Indianapolis AHEC train students studying physical therapy and occupational therapy in CPR.



The South Central Indiana AHEC partnered with the Indiana University Bloomington to support nursing students volunteering at a free health fair in Mitchell Indiana! South Central Indiana AHEC has a long partnership with the IU School of Nursing by helping students engage in clinical rotations in rural Indiana.



Each Fall, the Northwest Indiana AHEC supports Community Health Students at Purdue Northwest who volunteer to perform over 200 hearing screens on 1<sup>st</sup>, 4<sup>th</sup>, 7<sup>th</sup> and 10<sup>th</sup> grade students.



# Continuing Education and Professional Development

## We transform healthcare.

Healthcare is ever-changing, and many health professionals depend on us to bring them the latest education. The goal is to enhance quality of care, and that can make for a better quality of life for your community.



Nearly 40 nurses, respiratory therapists, and EMS personnel from six different hospital systems in the East Indiana AHEC region came together for a day of simulations and skills training to help them be better prepared to handle pediatric emergencies.



The East Indiana AHEC held an "OB Emergencies Outside the OB Department" workshop to help local EMS providers and hospital emergency department staff from several local hospitals build their skills in handling labor & delivery and postpartum emergencies. Participants received both classroom instruction and hands-on simulation practice.



The North Central Indiana AHEC partnered with Phoenix Paramedic Solutions to present their first ever Wellness Training Event. The focus of the event was to educate and equip providers to process and deal with trauma both in the field with others and that which they experience.

For more information about how to partner with your regional Area Health Education Center (AHEC) visit:

[indianaahec.org](http://indianaahec.org)



# Indiana AHEC Scholars Program



**AHEC**  
SCHOLARS

## AHEC Scholars make an impact.

If you are cared for by someone that was an Indiana AHEC Scholar – then you'll know that you're being cared for by an exceptionally informed, super-motivated professional who went above and beyond to complete our 2-year enrichment program while training for his or her career.



East Central Indiana AHEC Scholars volunteered to provide screenings at the Mississinewa Family Wellness Fair.



Northeast Indiana AHEC Scholars participated in the Junior Achievement of Northern Indiana JobSpark event to introduce students across the region to a variety of healthcare careers.



North Central Indiana AHEC Scholars students participating in a Poverty Simulation workshop facilitated by Circles of Indianapolis at St. Elizabeth School of Nursing in Lafayette to better understand the social drivers that impact community members in need.



East Indiana AHEC Scholars had the opportunity to build empathy and communication skills through participating in a dementia simulation activity at Columbus Regional Health.



# Indiana AHEC Scholars 2024 Graduates

## Anderson University

Loretta Boeger, BSN  
Gary Elleman, BSN

## Ball State University

Fortune Anjorin, BSN  
Adrianna Caballero, PhD  
Maddie Campbell, BA  
Morgan Day, BS  
Corynn Drabek, BS  
Tatyana Farrow, MA  
Katheryn Helou, PhD  
Jackson Ketcham, BSN  
Katherine Krupica, PhD  
Haley Matthias, Au.D  
Arieon Pendergrass, MA  
Jazmyne Spencer, BSN  
Ja'Rissa Watson, BSN

## Chamberlain University

Jehicheson Joseph, MS

## Goshen College

Andrea Martinez, BS

## Huntington University

Alexandria Bope, OTD  
Kateri Steinecker, OTD

## Indiana State University

Makenzie Hawkins, MSOT  
Mackenzie Lubbehusen, MPAS  
Dale Smeltzer, MSW

## Indiana University Bloomington

Brynn Hylton, MA  
Pritpal Kaur, MA  
Aidan Kramer, BS  
Claire O'Dell, MA

## Indiana University East

Bailey Bloom, BSN  
Elizabeth Geise, BSN  
Jennifer Marcum, BSN  
Lindsey Worthy, BSN

## Indiana University Purdue

### University Columbus

Jennifer Avila, BSN  
Kilee Littrell, BSN

## Indiana University School of Medicine

Zoe Burrow, MD  
Kyle Burton, MD  
Genaro DeLeon, MD  
Erica Geers, MD  
Sunland Gong, MD  
Benjamin Herman, MD  
Makayla Morning, MD  
Asael Nunez, MD  
Erika Robertson, MD  
Adrienne Sowers, MD  
Brock Swenton, MD  
Aish Thamba, MD  
Madelynne Wright, MD  
Cynthia Ziwawo, MD

## Indiana University South Bend

Hayley Whisler, BSN

## Indiana Wesleyan University

Chidinma Nnado, DNP

## Ivy Tech Community College

Joshua Cartee, AS  
Ishod Vasquez, AS

## Manchester University

Cassandra Hossinger, PhD  
Kendall Littlefield, PharmD

## Marian University

Peter Agbo, DNP  
Felecia Barnes, DNP  
Osarueme Osazee, DNP

## Marian University Tom and Julie Wood College of Osteopathic Medicine

Haley Anson, DO  
Zachary Cleaver, DO  
Eyovel Eyassu, DO  
John Zemkewicz, DO

## Purdue University

Oluwafemi Akinyemi, MD/MPH  
Lydia Aremu, MPH  
Sarah Aremu, BS  
Kathryn Arnold, MSAT  
Huma Aziz, MPH  
Elenil Deypalubos, MSAT  
Lynnet Francesca Kimera, PharmD  
Jasmine Reyes, PharmD  
Sophie Shank, BS  
Samuel Siwy, PharmD  
Yasmin Siwy, PharmD  
Aubrey Stolte, PharmD

## Purdue University Northwest - Hammond

Chika Obegolu, BSN

## Saint Mary Of-The-Woods College

Macie Dunham, BSN

## Saint Mary's College Notre Dame

Marissa Okeley, MS

## Taylor University

Melayna Borg, BA

## Trine University

Jenna Doumont, DPT  
Emma Knowles, DPT

## University of Evansville

Nathaniel Beggs, MPAS  
Dylan McKeever, MPAS  
Briley Serletic, DPT  
Taylor Swartzentruber, DPT

## University of Saint Francis

Ashley Lofton, AS

## University of Southern Indiana

Keely Byers, BS  
Tammy Fields, OTD

## Valparaiso University

Michelle Stoyanov, MPAS

# Partners Making a Difference

## **PARTNERSHIP MATTERS AWARD**

This award goes to organizations or programs whose partnership has provided outstanding opportunity for the success of regional Indiana AHEC programs. These organizations/programs demonstrate a motivation to work collaboratively and leverage scarce resources effectively to support the next generation of Hoosier health professionals.

**East Central Indiana AHEC** — Leffler Academy

**East Indiana AHEC** — Hanover College

**Metropolitan Indianapolis Central Indiana AHEC** — Center for Aging and Community at University of Indianapolis

**Northeast Indiana AHEC** — Recovery Cafe of Lafayette

**North Central Indiana AHEC** — Cameron Memorial Hospital - Clinical Innovation Resource / Education Department

**Northwest Indiana AHEC** — Janet Joseph - HealthVisions Midwest

**South Central Indiana AHEC** — Meagan Shipley, PhD, CHES School Health Coordinator – Lawrence County Community Health

**Southwest Indiana AHEC** — Carol Collier-Smith – ECHO Community Health Care

**West Central Indiana AHEC** — Rural Health Innovation Collaborative

## **OUTSTANDING PRECEPTOR AWARD**

This award goes to individuals or organizations for their dedication and commitment to excellence in experiential education and support for Indiana AHEC students engaged in clinical training in rural and underserved communities.

**East Central Indiana AHEC** — Dr. Kent Lehman, Adams County Family Physicians

**East Indiana AHEC** — Dr. Adam Rosenfeld, Henry Community Health

**Metropolitan Indianapolis Central Indiana AHEC** — Dr. Sabrina Williams, Optum Family Physicians

**Northeast Indiana AHEC** — Dr. Jamin Yoder, Parkview Family Physicians

**North Central Indiana AHEC** — Dr. David Regnier, IU Health Arnett

**Northwest Indiana AHEC** — Dr. J. Timothy Ames, Marram Health Center

**South Central Indiana AHEC** — Dr. Jerome B. Sneed, MD - Southern Indiana Physicians Family & Internal Medicine

**Southwest Indiana AHEC** — Erin Sievers, PA-C and Allyson Wehrheim, PA-C, Good Samaritan Hospital

**West Central Indiana AHEC** — Union Hospital Family Medicine Residency

## **AHEC HERO Award**

This award goes to individuals or organizations who go above and beyond the call of duty to ensure that the mission of the Indiana AHEC Program is successful. The individuals/organizations are recognized for outstanding volunteer service, advocacy, or other extraordinary efforts.

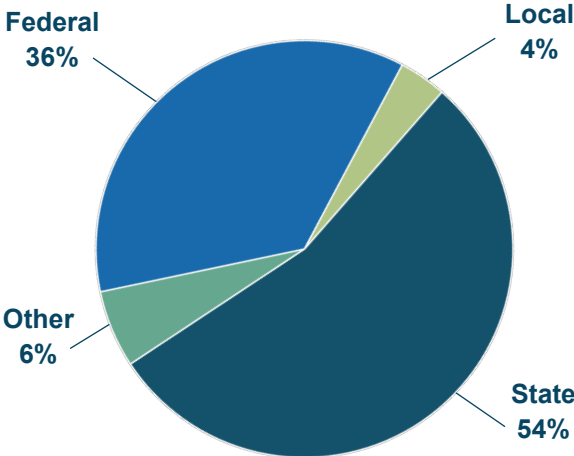
**Indiana University School of Medicine Department of Family Medicine** — Eric Kimes



# Financial Summary

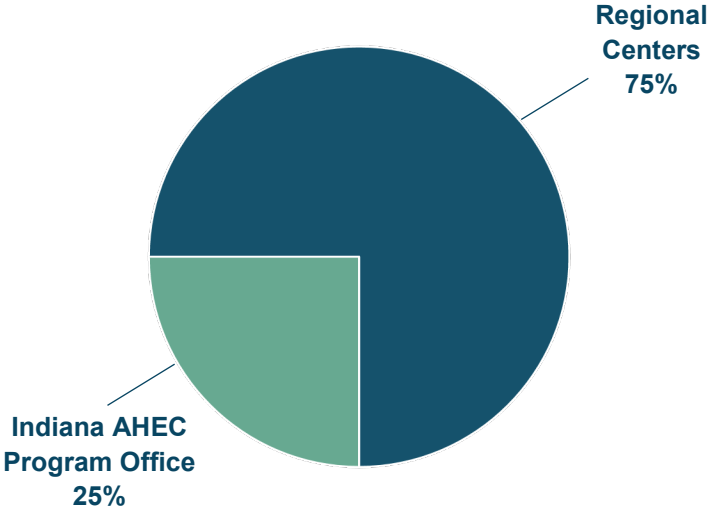
## Award Breakdown

\$4,111,468



## Disbursement

\$4,111,468



Important: If interested in expenditure summary, this information is available through the Indiana AHEC Network Office after January 1, 2025.

This project is supported by the Health Resources and Services Administration (HRSA) of the U.S. Department of Health and Human Services (HHS) under grant number U77HP23068 Area Health Education Centers Point of Service Maintenance and Enhancement for a total of \$1,481,931. This information or content and conclusions are those of the author and should not be construed as the official position or policy of, nor should any endorsements be inferred by HRSA, HHS or the U.S. Government.

Indiana AHEC Network  
Indiana University School of Medicine  
Department of Family Medicine  
980 Indiana Avenue  
Lockefield Village 1164  
Indianapolis, IN 46202