

## Foundational Studies Assessment 2021

### Ethics & Social Responsibility

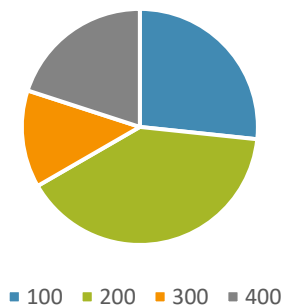
#### Learning Outcomes

1. Understand the historical and philosophical bases of ethical decision-making and social responsibility.
2. Use independent thinking, critical analysis, and reasoned inquiry when assessing personal, professional, and societal issues.
3. Demonstrate the ability to make personal and professional decisions by applying knowledge and skills obtained from the study of ethics and theories of social responsibility.
4. Articulate how their ethical framework and understanding of social responsibility shape their actions.

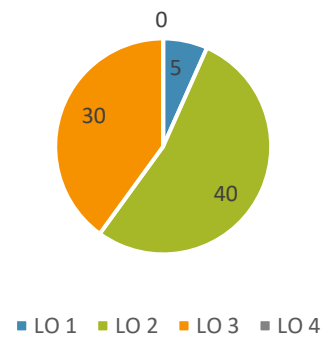
#### Sample Size

**n<sub>sections</sub> = 15**      **n<sub>artifacts</sub> = 75**

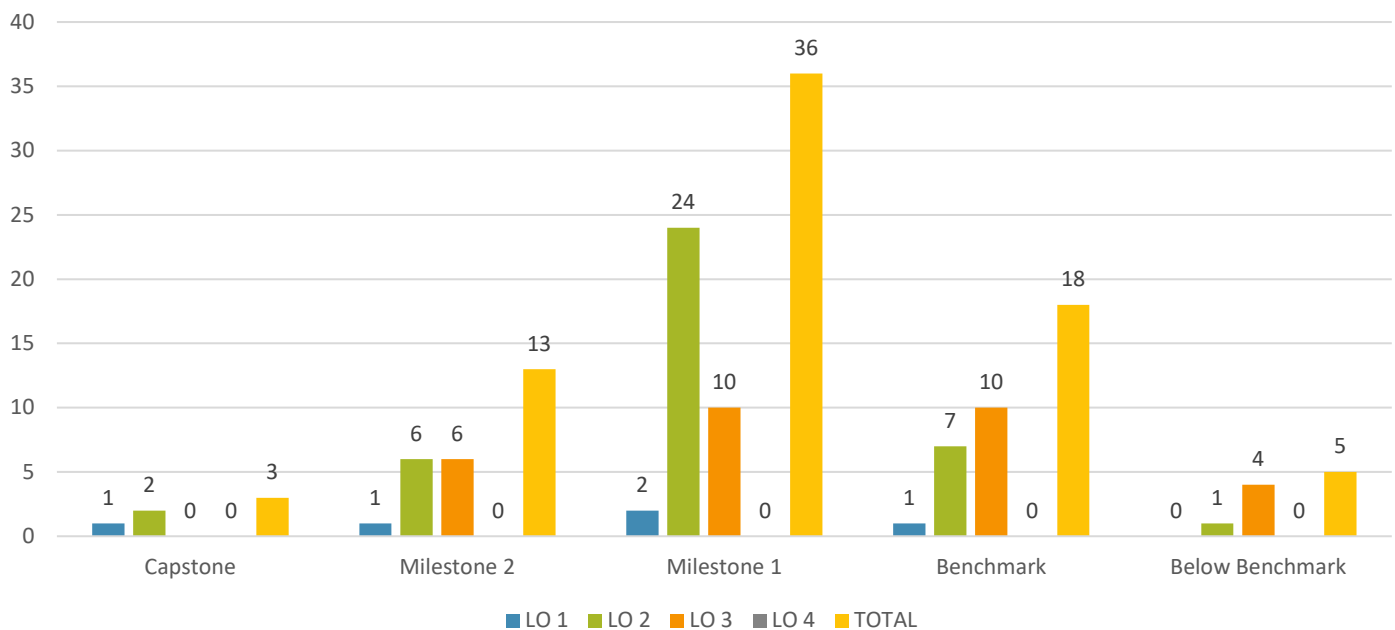
Course Level Distribution



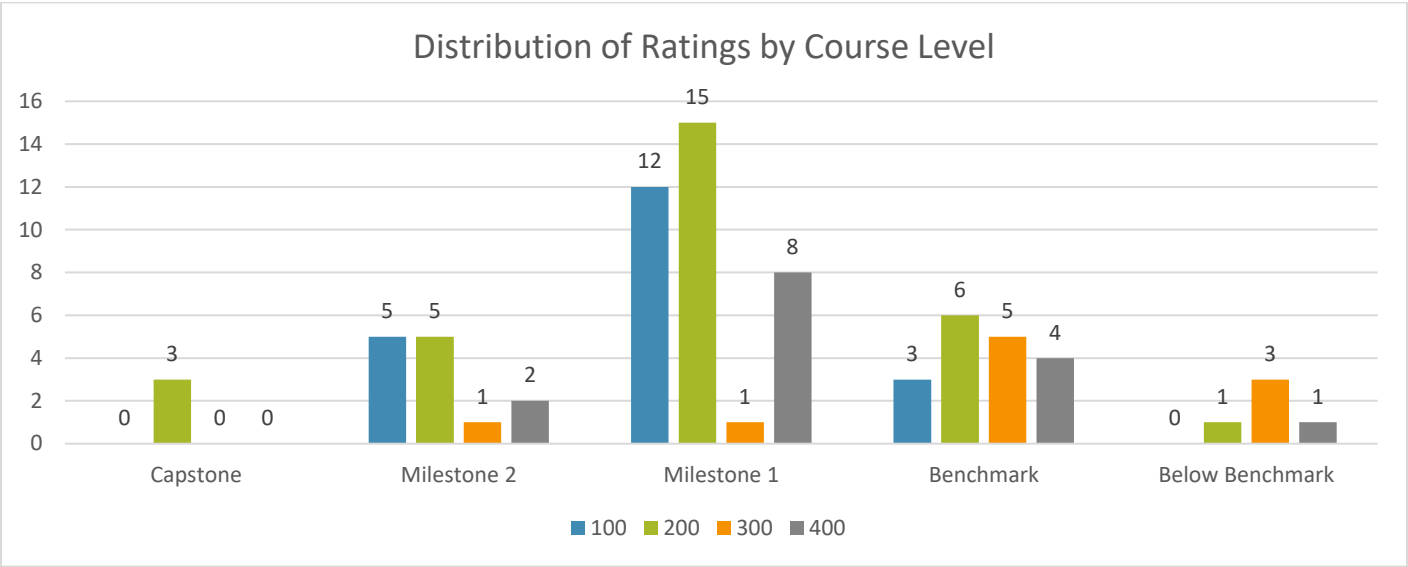
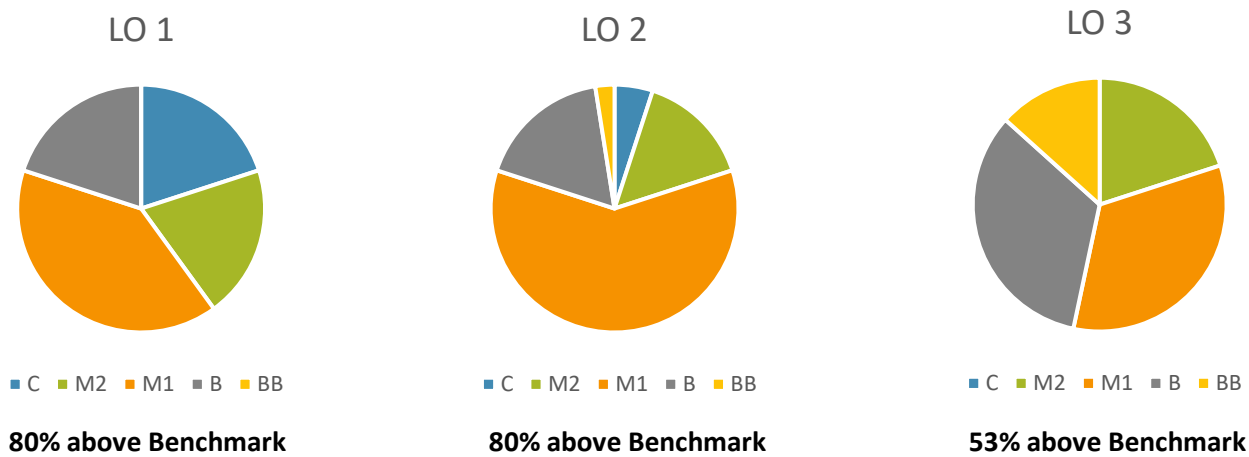
Learning Outcome Distribution



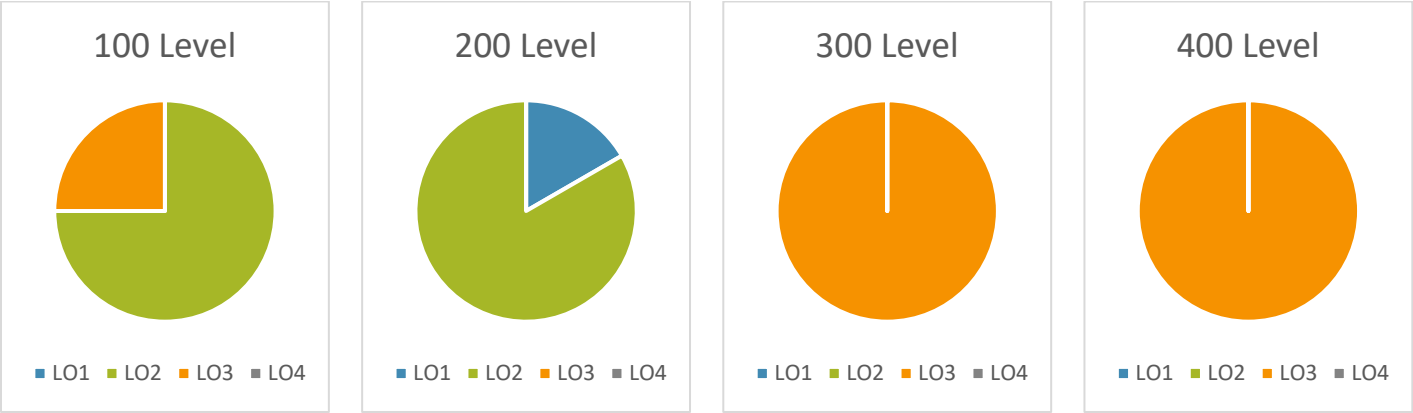
Rating Distribution by Outcome



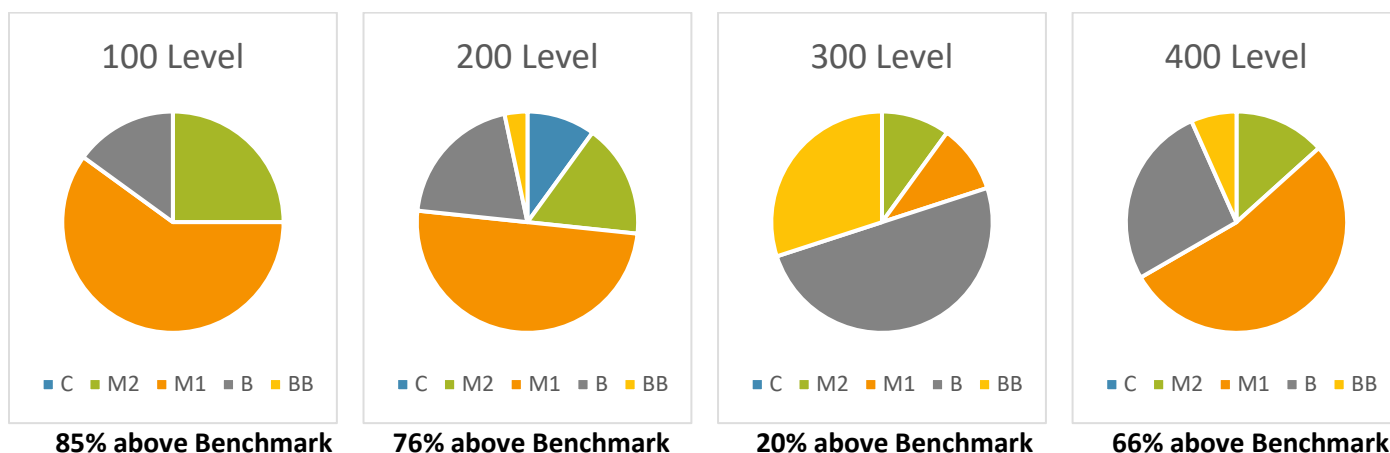
Evaluation Rating by Learning Outcome



Learning Outcome Distribution by Course Level



## Evaluation Rating by Course Level



## Reviewer Notes

Review Teams: Ann Rider & Jason Dean

Arif Akgul & Marsha Miller

Cat Paterson & Kevin Ward

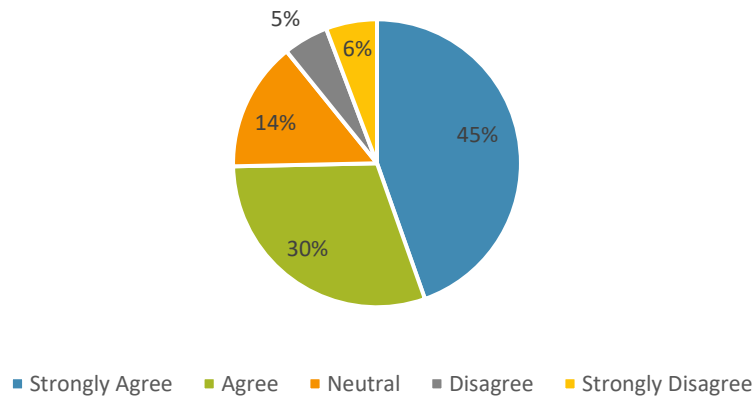
Outcome Rating Potentially Affected	Factor			
	Assignment Type or Instructions	Learning Outcome Language	Rubric Language	Other
<b>LO1</b>				
<b>LO2</b>	Final exam single paragraph response was not enough for sufficient evaluation – Class 3, M1(5)			
	Assignment instructions not detailed and no clear expectations included – Class 6, M1(3), B(2)			
<b>LO3</b>	Prompt does not compel students to meet outcome. While one student did really well, most saw assignment as a course evaluation – Class 1, M2(1), M1(1), BB(3)			
	Unsure assignment prompts students well enough – Class 4, M2(1), M1(4)			
			Rubric distinction between “emerging” and “robust” is not helpful for distinguishing M1 from M2 – Class 11, M2(1), M1(3), B(1)	
	Prompt does not compel students to meet outcomes – Class 15, B(5)			

## Student Self-Report Data from Course Ratings – Fall 2020

Response Rate = 34%

**Statement 1:** This course increased my ability to assess personal, professional, and societal issues using independent thinking, critical analysis, and reasoned inquiry. (LO2)

Student Response to S1



**Statement 2:** This course increased my ability to articulate how my ethical perspective and sense of social responsibility shape my actions. (LO4)

Student Response to S2

